



NoAGE

booster



Standard NoAGE

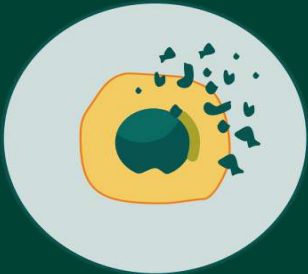


NoAGE

works in 5 ways

5 MAIN PROCESSES FACILITATING AGING

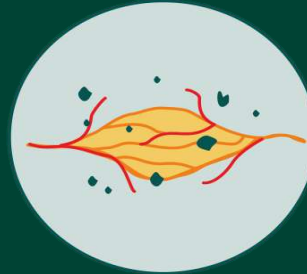
Oxidative damage



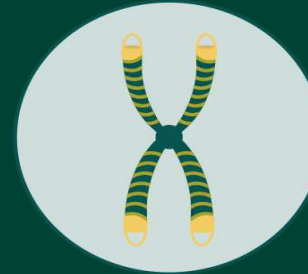
Glycation



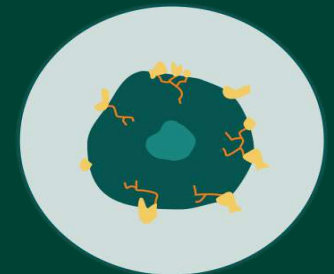
Chronic inflammation



Telomere shortening



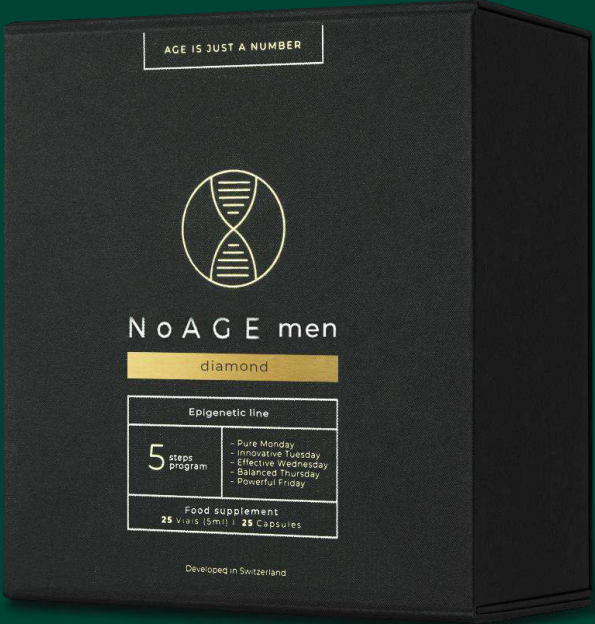
Immune system decline



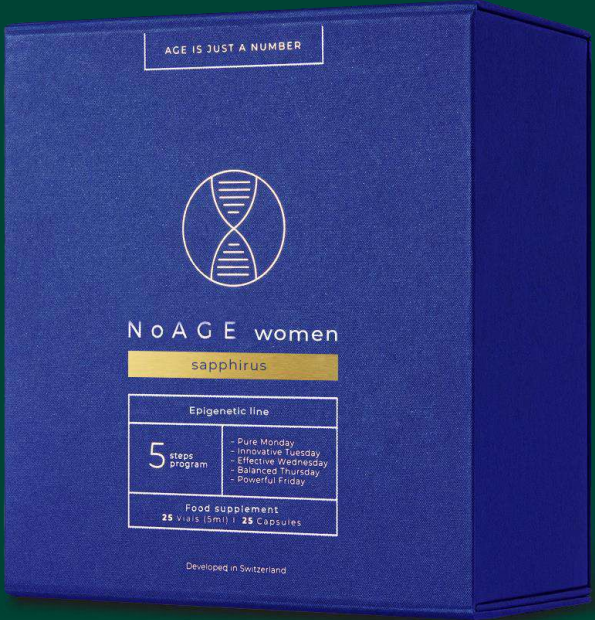
NoAGE



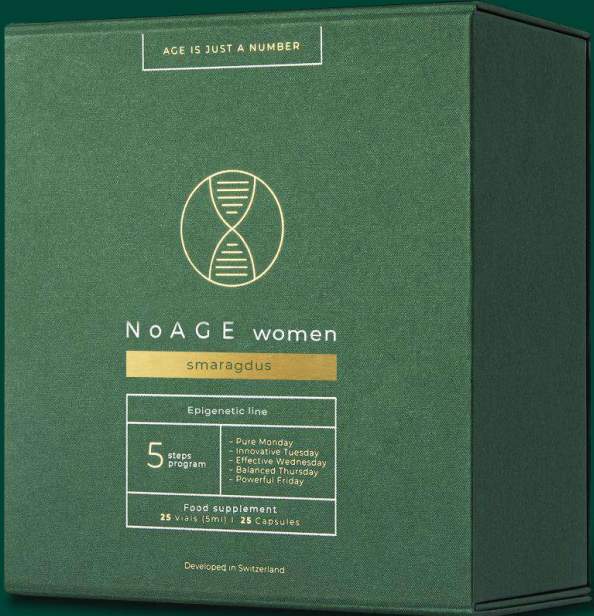
NoAGE



diamond



sapphirus



smaragdus

NoAGE booster



NoAGE

works in 5 ways

34 VALUABLE INGREDIENTS



NMN, spermidine
intensively activate
mitochondria

TO BOOST ENERGY LEVELS



Veri-Te™
Trans-
resveratrol



Berberin



Higher
dose of
antioxidants

NoAGE booster



NoAGE



Energy source for women

Energy source for men

NoAGE booster



NoAGE booster – a science-based, innovative energy and longevity solution for men and women over 30.

This epigenetic product helps maintain normal physical and psychological function. It contains valuable ingredients that complement each other's effects and is enriched with spermidine and NMN (nicotinamide mononucleotide).



EPIGENETICS

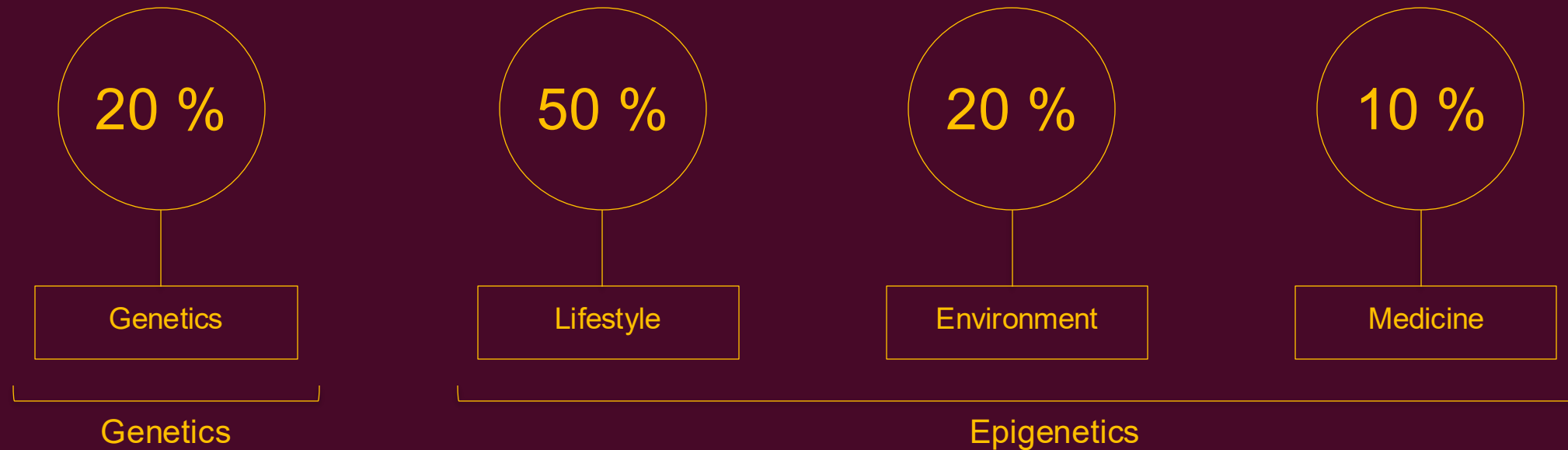
(from the Greek "epi" – above)
is the science that studies the impact of the environment on the expression of human genes.

Environmental factors can modulate gene expression by activating or silencing specific genes.

HOW DO EPIGENETIC PRINCIPLES APPLY IN MEDICINE?



The World Health Organization states that health is influenced by:

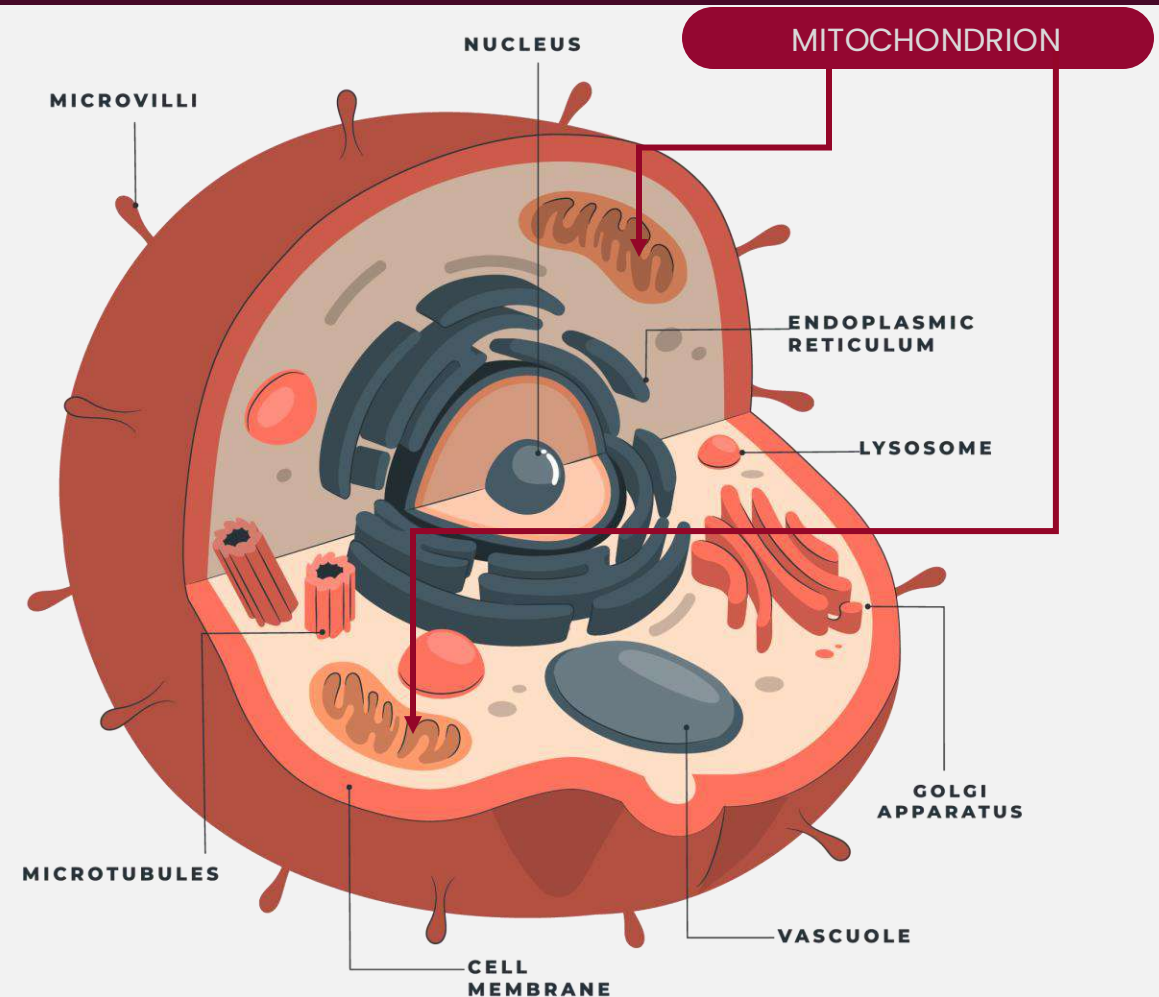


WHY ARE MITOCHONDRIA IMPORTANT?



NoAGE

- 1 Energy production
- 2 Regulation of cellular metabolism
- 3 Control of oxidative stress
- 4 Cell death and regeneration (apoptosis, autophagy)



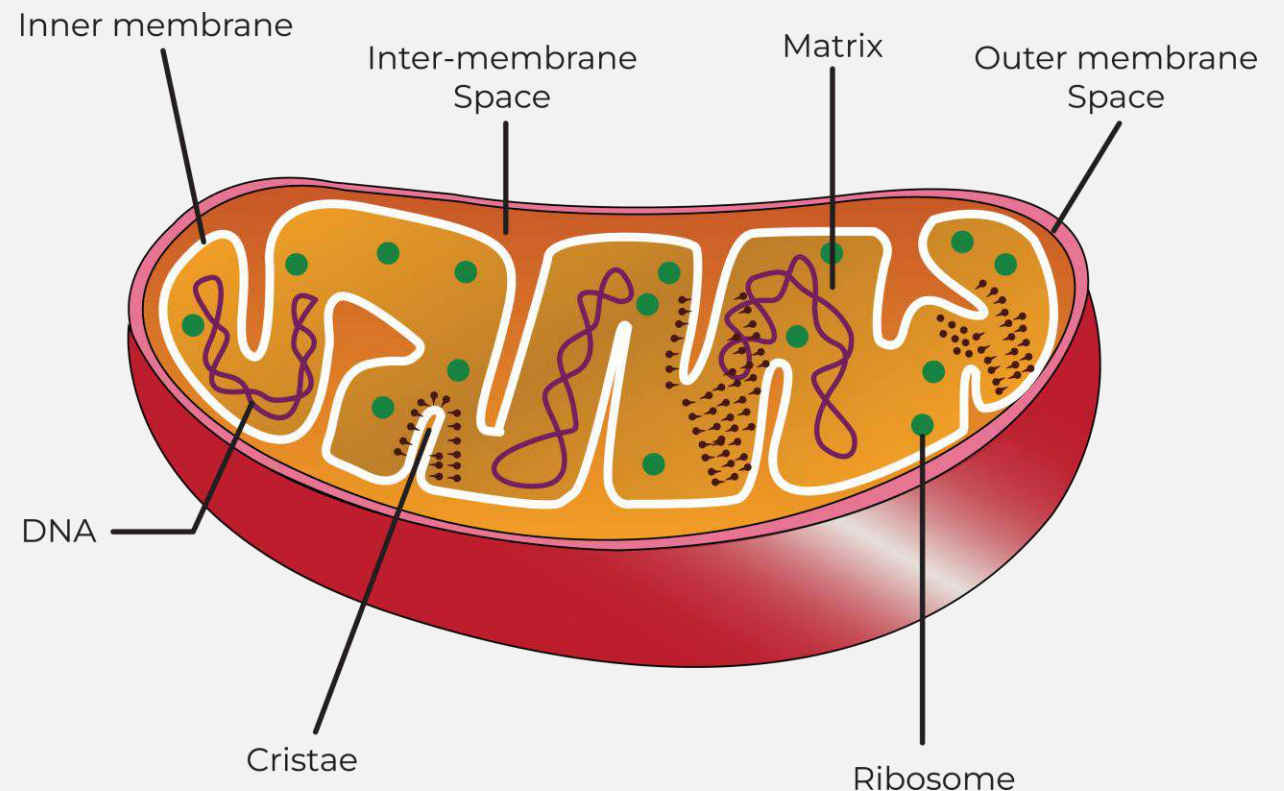
MITOCHONDRIAL STRUCTURE



NoAGE

A mitochondrion is a double-membrane organelle within a cell, responsible for energy production. It consists of:

- **Outer membrane** – smooth and permeable to small molecules.
- **Inner membrane** – wrinkled (forming cristae), impermeable to ions; this is where the respiratory chain reactions take place.
- **Intermembrane space** – the area between the outer and inner membranes.
- **Matrix** – the internal space of the mitochondrion containing enzymes, DNA, and ribosomes.
- **Main function** – production of ATP (energy molecules) for cellular respiration.



NMN



NoAGE

NMN (nicotinamide mononucleotide) derived from plant extract is intended to support longevity.

NMN is a natural compound in the body and a precursor to NAD⁺, which is vital for energy production, reducing oxidative stress, repairing DNA, and supporting immune function.

NAD⁺ levels decline with age, impacting cellular function and aging. Sirtuins help protect DNA, regulate genes, and may promote cellular longevity¹⁻².

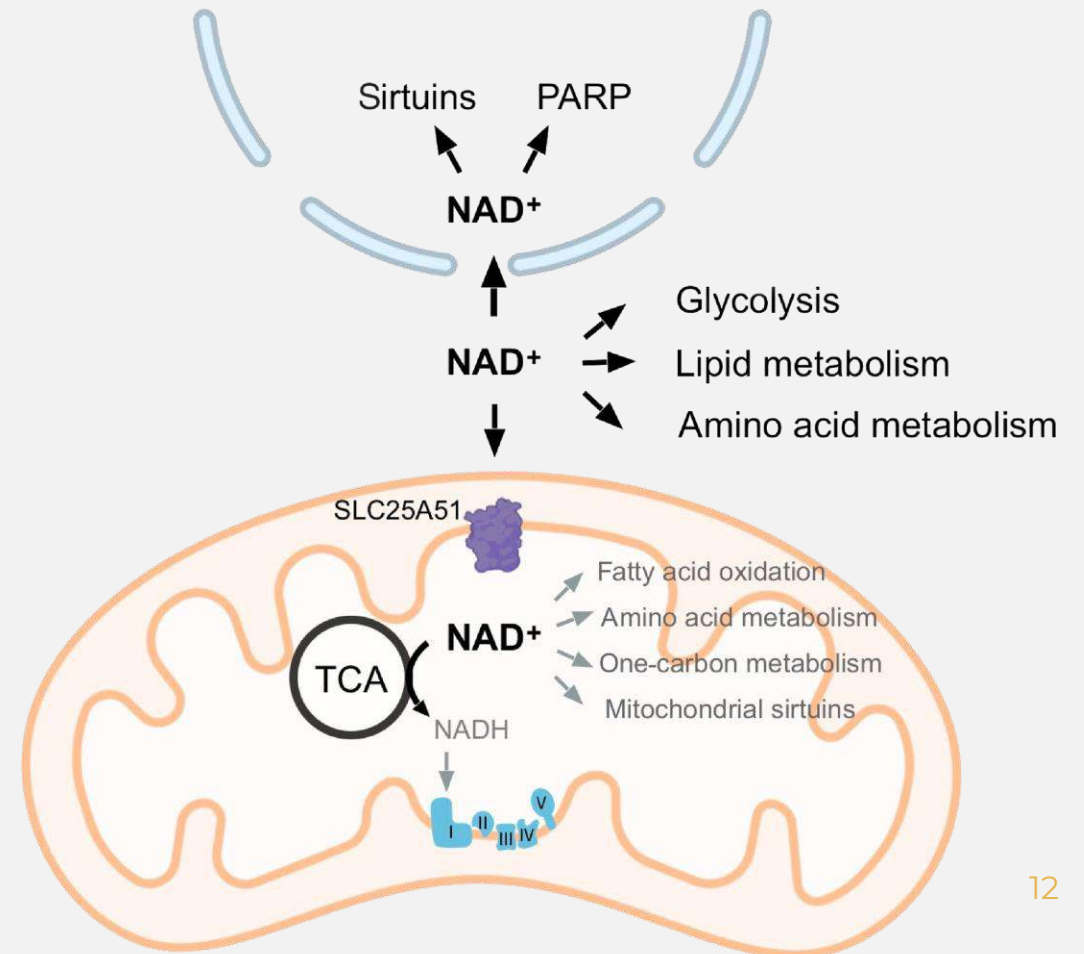


NMN is NAD⁺ precursor



Effects of NAD⁺:

- ATP production
- Regulation of gene expression
- DNA repair
- Immune system support
- Regulation of circadian rhythms
- Associated with slower aging
- Activates sirtuin production



SPERMIDINE



NoAGE

Spermidine (SPN) is a natural polyamine with anti-inflammatory properties¹. Levels of it decrease with age, however, it is needed for tissue regeneration, cell proliferation and growth².

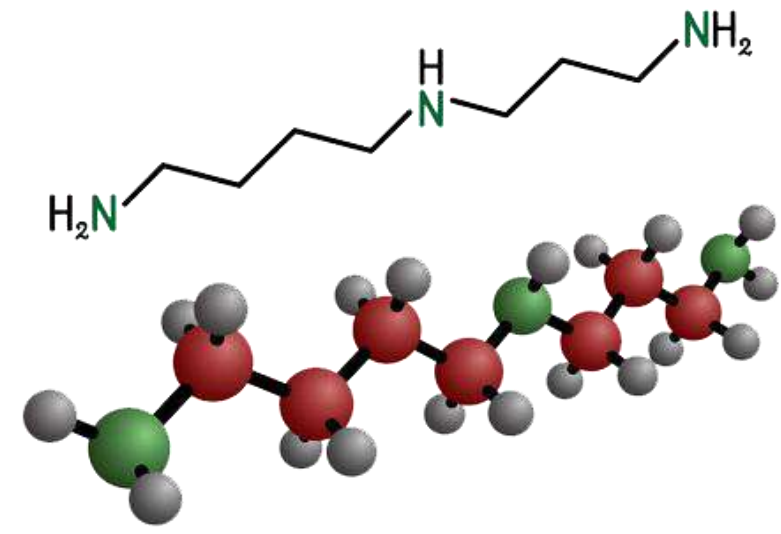
A high dietary intake of spermidine has been associated with a 5.7-year increase in lifespan¹.

SPERMIDINE – A NATURAL POLYAMINE



NoAGE

- 1 Helps improve mitochondrial function
- 2 Supports DNA stability
- 3 Promotes autophagy and apoptosis
(by inhibiting the EP300 protein)
- 4 Exhibits antioxidant and
anti-inflammatory properties
(by suppressing NF-kappaB)

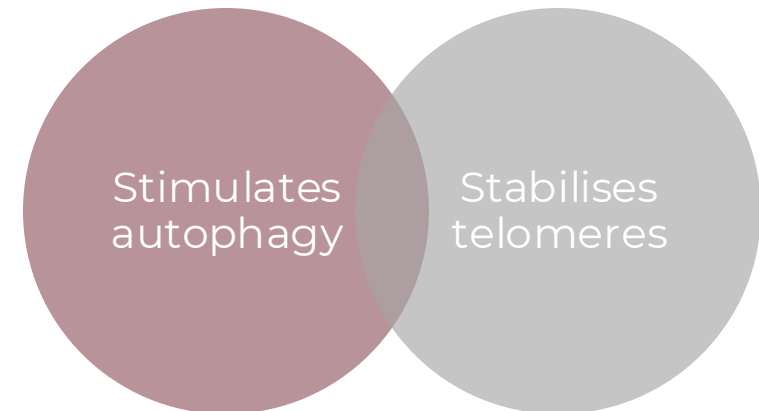


NMN and SPN activate sirtuins



SIRTUINS – a group of proteins responsible for DNA repair, gene expression, metabolism and inflammation.

Sirtuins affect aging in two ways:

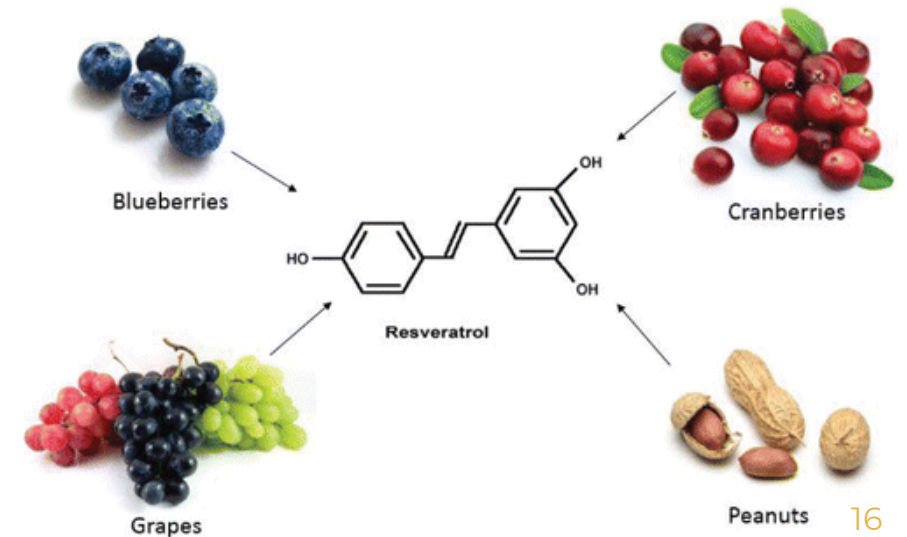


Veri-Te™ (trans-resveratrol)



NoAGE booster contains Veri-Te™, providing a powerful antioxidant effect and skin rejuvenating properties.

- 1 Patented
- 2 Innovative: produced by fermentation
- 3 >98 % pure trans-resveratrol



RESVERATROL



Acts as a powerful antioxidant, reducing oxidative stress in cells and modulating aging-related signaling pathways.

Placebo-controlled, double-blind clinical trial showed that resveratrol:

- Significantly reduced **systemic oxidative stress**.
- Increased plasma antioxidant capacity and **skin antioxidant activity**.
- **Improved skin moisture** and elasticity, reduced signs of roughness and wrinkle depth.
- Significantly **reduced the intensity of pigment spots**.

5

THEORIES THAT DETERMINED 5 EFFECTS OF NoAGE PRODUCTS:

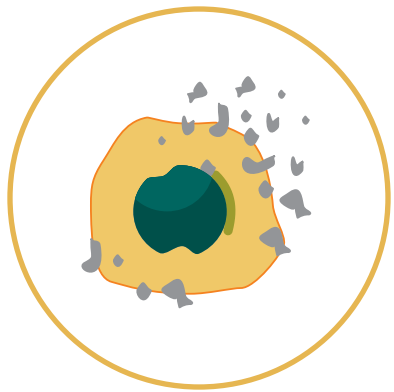


- Free radical theory
- Cross-link theory
- Inflammatory theory
- Somatic DNA mutation theory
- Immunological theory

5 MAIN PROCESSES FACILITATING AGING



1



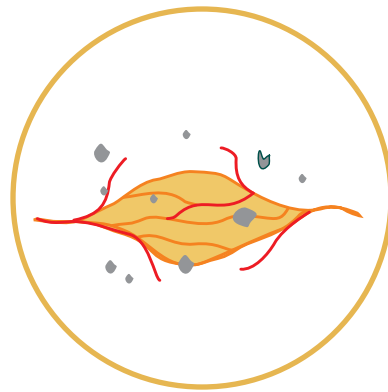
Oxidative
damage

2



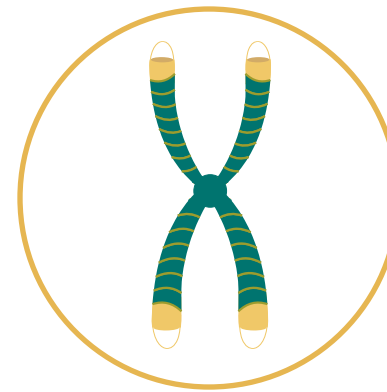
Glycation

3



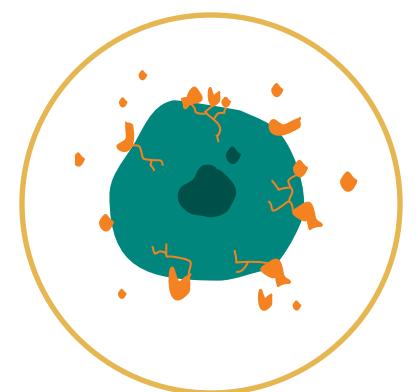
Chronic
inflammation

4



Telomere
shortening

5

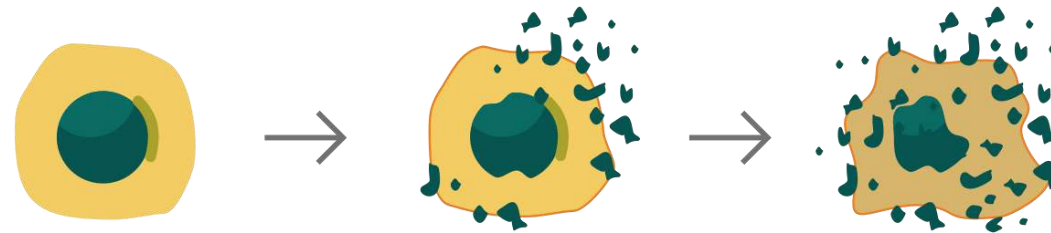


Immune system
decline

OXIDATIVE DAMAGE



NoAGE

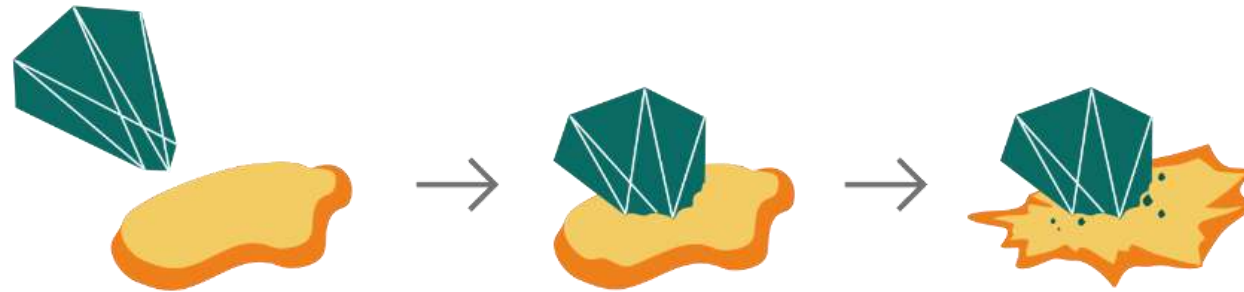


Occurs when free radicals attack cells and damage lipids, proteins and DNA.
This gradual process causes cells to age and triggers irreversible changes.

GLYCATION



N o A G E

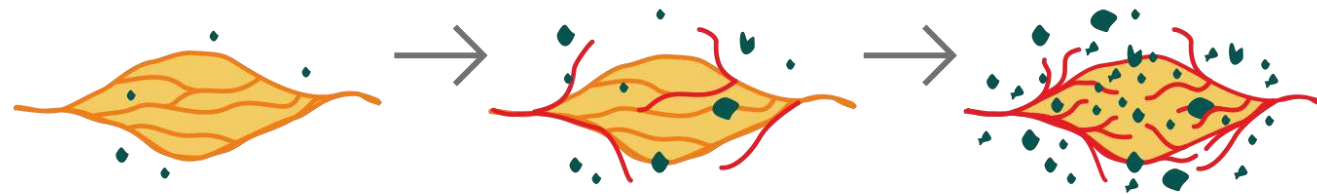


A biochemical phenomenon where an excess of sugars in the bloodstream combine with proteins or fats (lipids), creating sticky compounds that can harm cells and accelerate skin aging.

CHRONIC INFLAMMATION



No AGE

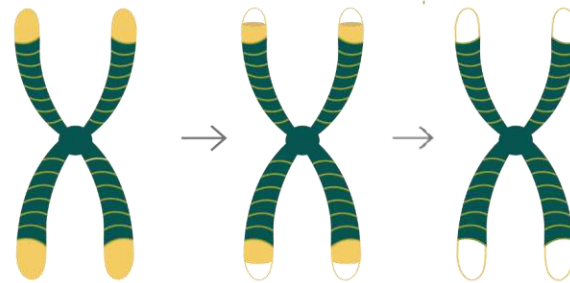


A phenomenon where some cells in the human body die, and some do not undergo apoptosis (programmed cell death) despite ceasing growth and division, leading to the accumulation of unnecessary cells and subsequent age-related inflammatory changes.

TELOMERE SHORTENING



NoAGE



Occurs not only due to physiological ageing but also due to external factors: stress, poor nutrition, lack of physical activity, and harmful habits. Telomeres act as a protective "cap," safeguarding genetic information from degradation and accidental fusion with other chromosomes.

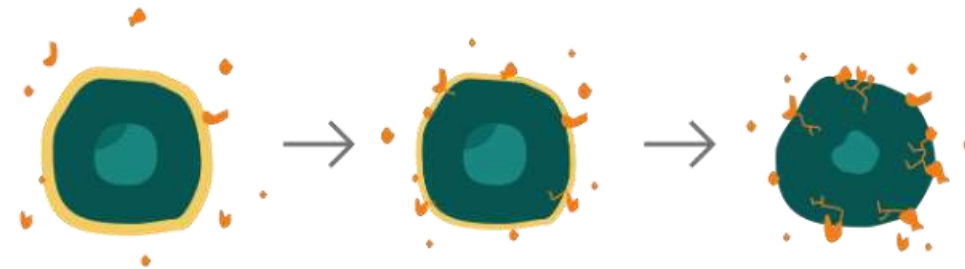
Their functions include:

- Regulation of cellular ageing
- Protection against DNA damage
- Maintenance of genome stability

IMMUNE SYSTEM DECLINE



NoAGE



Modifies the body's response to external influences. Becomes less capable of defending against infections, chronic diseases, and inflammation. The immune system of an aging body also ages and weakens.

Therefore, it is essential to maintain a balanced diet, manage stress, stay active, and replenish internal resources.



NoAGE

Each daily dose
(MONDAY–FRIDAY)
is designed to inhibit a
specific aging process.

FOR HER

From 30 years of age

A 5-step energy programme for women aged 30 and up.

NoAGE women booster helps maintain normal physical and psychological function. It contains 34 valuable ingredients that complement each other's effects and is enriched with spermidine and NMN (nicotinamide mononucleotide).



NoAGE



MONDAY

OXIDATIVE DAMAGE



Helps protect cells from oxidative damage.

SEA BUCKTHORN, EMBLIC MYROBALAN,
AND CHINESE WOLFBERRY EXTRACTS

Helps maintain normal acid-base metabolism.

ZINC

Help maintain normal nervous system function and
cognitive performance.

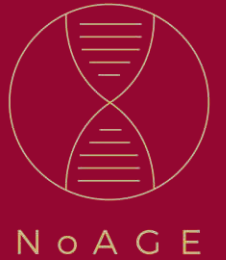
ROSEROOT EXTRACT

Has antioxidant and anti-inflammatory properties.

SPERMIDINE

TUESDAY

GLYCATION



Helps maintain normal carbohydrate metabolism.

POMEGRANATE FRUIT EXTRACT

Helps maintain normal blood glucose levels.

CHROMIUM

Helps maintain normal protein and glycogen metabolism, energy metabolism, and hormonal activity.

VITAMIN B6

WEDNESDAY

CHRONIC INFLAMMATION



Helps maintain normal immune and reproductive system function and vitality.

CHINESE GINSENG ROOTS EXTRACT

Helps maintain vitality.

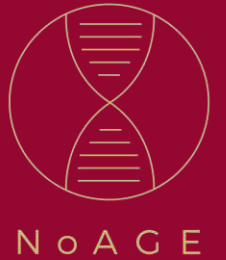
BETAINE

Supports energy production in cells.

COENZYME Q10

THURSDAY

TELOMERE SHORTENING



Helps maintain normal reproductive function, cellular ageing, and energy levels.

CHEBULIC MYROBALAN FRUIT EXTRACT

Helps maintain normal hair and nail condition.

BILBERRY FRUIT EXTRACT

Helps reduce fatigue.

VITAMIN B2

Helps support normal cellular aging functions and energy levels.

ASTAXANTHIN (FROM FRESHWATER GREEN ALGAE EXTRACT)

FRIDAY

IMMUNE SYSTEM DECLINE



NoAGE

Helps maintain normal immune system function.

**ELDERBERRY FRUIT AND
CHINESE GINSENG ROOT EXTRACTS**

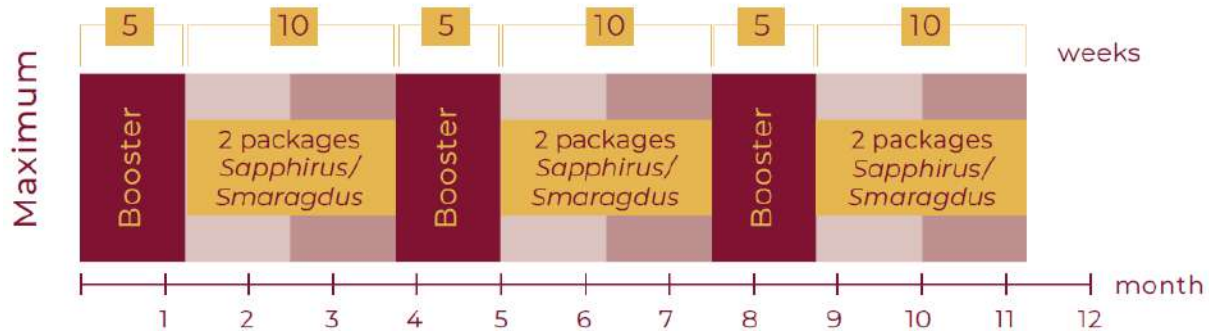
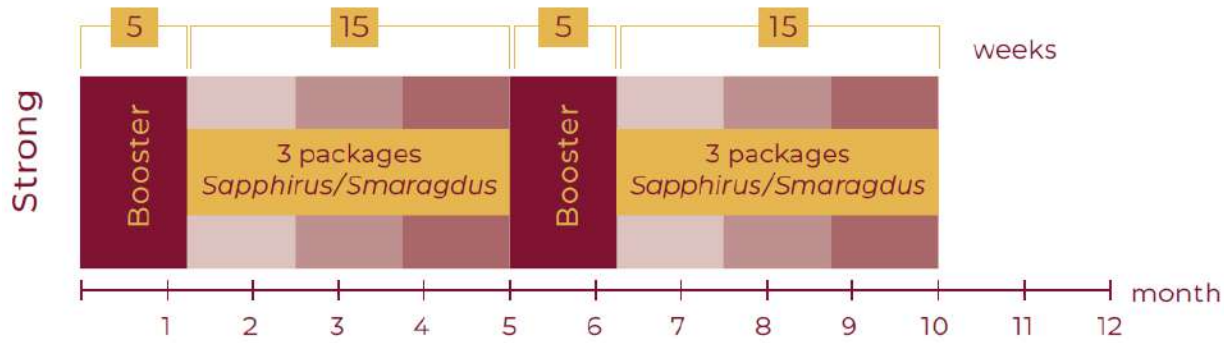
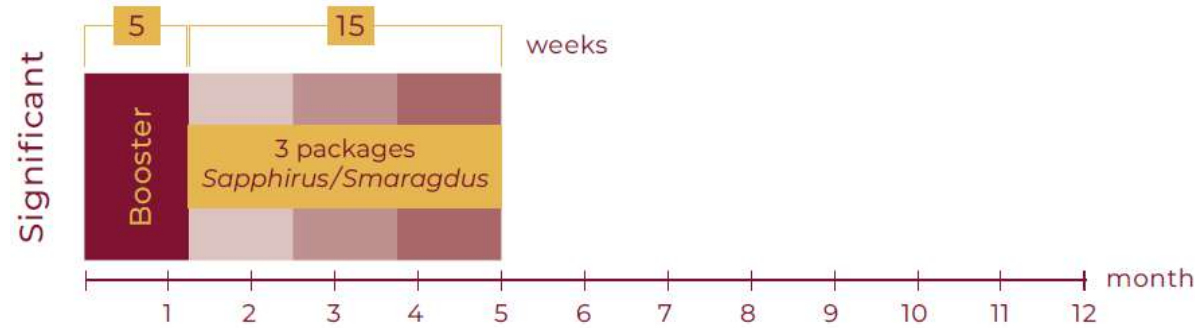
Help support circulation and memory.

GINKGO BILOBA LEAF EXTRACT

Improves mitochondrial function and
helps maintain DNA stability.

SPERMIDINE

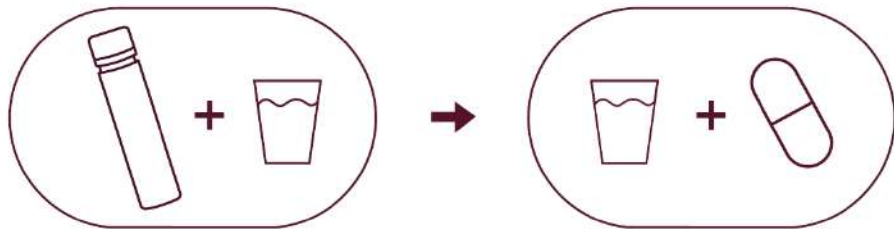
How to use NoAGE women booster





NoAGE

USAGE



Take one capsule and one vial (25 ml) per day, in the morning after a meal. Use according to the days of the week indicated on the inner packaging.

Shake the contents of the vial and pour it into a glass of water, then use it to swallow the capsule.

FOR HIM

From 30 years of age

A 5-step energy programme for men aged 30 and up.

NoAGE men booster helps maintain normal physical and psychological function. It contains 34 valuable ingredients that complement each other's effects and is enriched with spermidine and NMN (nicotinamide mononucleotide).



NoAGE



MONDAY

OXIDATIVE DAMAGE



Helps protect cells from oxidative damage.

SEA BUCKTHORN AND EMBLIC MYROBALAN
EXTRACTS, VITAMIN C

Helps maintain normal reproductive function and
hormonal activity.

PUNCTURE VINE FRUIT EXTRACT

Help maintain normal fertility, testosterone levels in
the blood, and normal DNA synthesis.

ZINC

Has antioxidant and anti-inflammatory properties.

SPERMIDINE

TUESDAY

GLYCATION



Helps maintain normal carbohydrate metabolism.

POMEGRANATE FRUIT EXTRACT

Helps maintain normal blood sugar levels.

CEYLON CINNAMON TREE BARK EXTRACT

Helps maintain normal protein and
glycogen metabolism.

VITAMIN B6

WEDNESDAY

CHRONIC INFLAMMATION



Helps maintain normal immune and reproductive system function and vitality.

CHINESE GINSENG ROOTS EXTRACT

Helps to maintain normal nervous system activity.

BLACK PEPPER FRUIT EXTRACT

Helps maintain normal immune system function.

BETAINE

THURSDAY

TELOMERE SHORTENING



Helps maintain normal reproductive function, cellular ageing, and energy levels.

CHEBULIC MYROBALAN FRUIT EXTRACT

Helps maintain normal energy metabolism and reduce fatigue.

VITAMIN B2

Helps support normal cellular aging functions and energy levels.

ASTAXANTHIN (FROM FRESHWATER GREEN ALGAE EXTRACT)

Helps maintain normal physical and mental performance.

ELEUTHEROCOCCUS ROOT EXTRACT

FRIDAY

IMMUNE SYSTEM DECLINE



NoAGE

Helps maintain normal immune system function.

**EASTERN PURPLE CONEFLOWER FLOWER AND
ELDERBERRY FRUIT EXTRACTS**

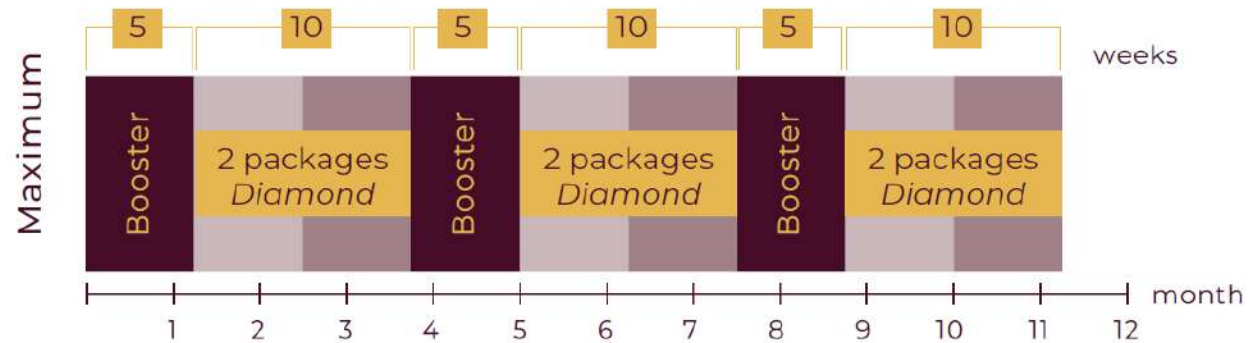
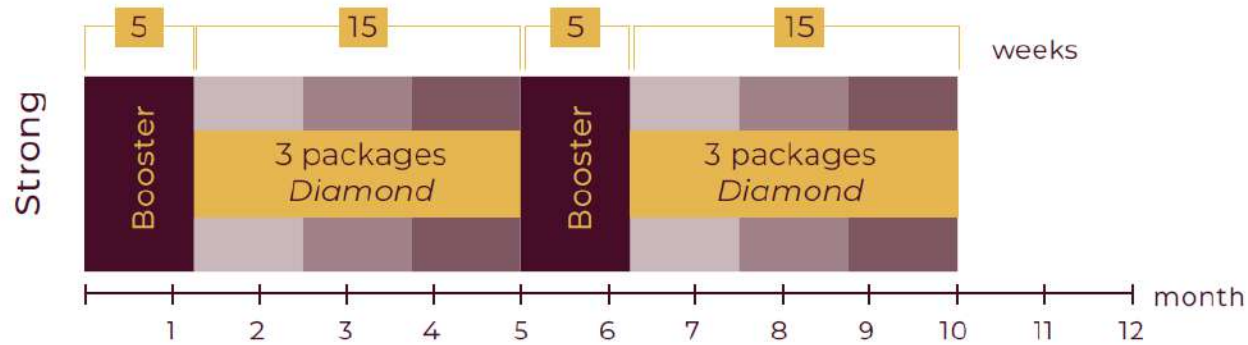
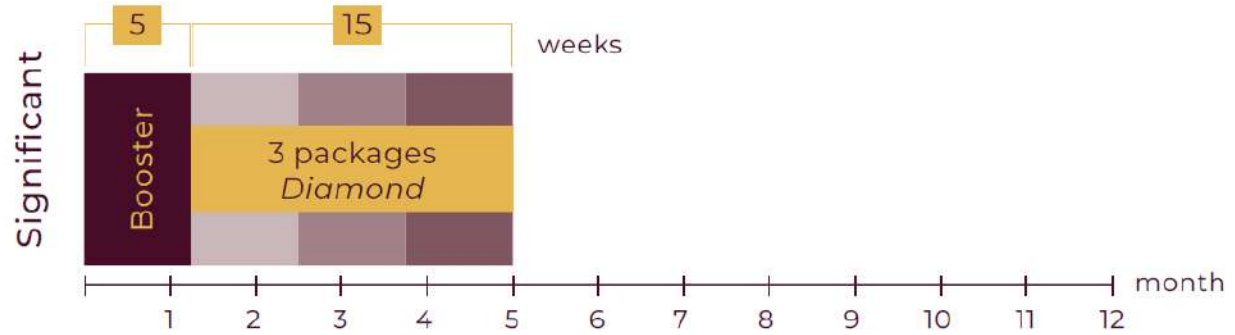
Help maintain normal fertility and cognitive function.

SAFFRON CROCUS STIGMA EXTRACT

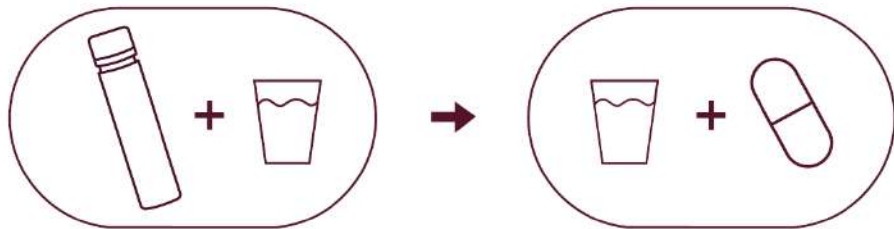
Improves mitochondrial function and
helps maintain DNA stability.

SPERMIDINE

How to use NoAGE men booster



USAGE



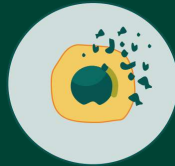
Take one capsule and one vial (25 ml) per day, in the morning after a meal. Use according to the days of the week indicated on the inner packaging.

Shake the contents of the vial and pour it into a glass of water, then use it to swallow the capsule.

NoAGE vs NoAGE booster

Works in 5 ways:

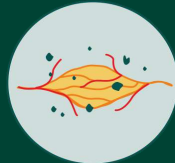
Oxidative damage



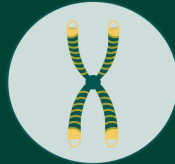
Glycation



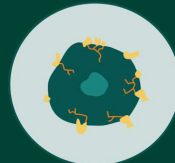
Chronic inflammation



Telomere shortening



Immune system decline



Works in 5 ways

Emphasis on
BOOSTING ENERGY LEVELS

+

NMN, spermidine intensively
activate mitochondria

+

Veri-te™ (trans-resveratrol)

+

Higher dose of antioxidants

NoAGE

Unique biomedical products



NoAGE

for men over 30

for women over 25

for women over 50



energy source for women

energy source for men